

# PowerSnap Power Connectors



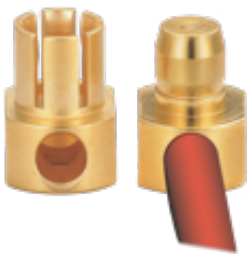
- Snap feature for secure mating not typically present on slide-on style power connectors
- Ideal for board-to-board or cable-to-board applications
- Available in SMT, thru-hole, and cable versions
- Capable of carrying current up to 40 Amps, depending on configuration



Winchester products, like PowerSnap Power Connectors, are now sold under the Win™ brand from Winchester Interconnect™

## Product Description

Winchester's PowerSnap is an ideal solution for transferring high power from a printed circuit board to anywhere inside a device. PowerSnap's unique features provide a robust alternative to weak soldered wires, a more reliable alternative to cable lugs, and a better-suited solution than modified RF connectors. Due to its small size, the PowerSnap allows for multiple connections in densely configured arrangements. PowerSnap's wide range of configurations and styles allow you to optimize your design for your exact requirements.



- Quick connect power terminal
- Snap-in locking feature for secure mating
- Disengagement force of 2.3 lbs.
- Current capacity up to 40 Amps
- Meets MIL-STD-202G for shock and vibration



- Pick-and-place, tape-and-reel packaging options for automated equipment
- Low mated pair profile enables power in tight spaces
- Can be used in conjunction with Size 8 Combination D-Sub power contacts



- Surface mounted and thru-hole design configurations standard
- Custom design options available based on unique system requirements
- Non-magnetic options available
- RoHS and REACH compliant

 **Winchester**  
Interconnect.

*We Energize Innovation.*

Specifications

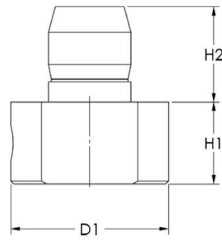


Fig. 1

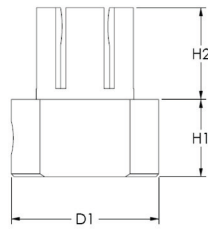


Fig. 2

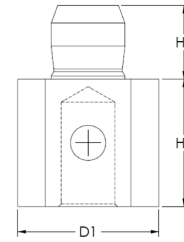


Fig. 3

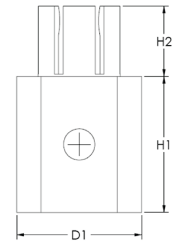


Fig. 4

Part #	Fig.	Gender	Hgt.(H1)/mm	Hgt.(H2)/mm	Dia.(D1)/mm	AWG	AMPS	Description
01431	1	Plug	0.144/3.66	0.167/4.24	0.275/6.99	20	8	Rt. Angle Wire Contact
01432	2	Jack	0.144/3.66	0.170/4.32	0.275/6.99	20	8	Rt. Angle Wire Contact
01332	1	Plug	0.144/3.66	0.167/4.24	0.275/6.99	14	20	Rt. Angle Wire Contact
01208	1	Plug	0.250/6.35	0.187/4.75	0.275/6.99	14	20	Rt. Angle Wire Contact
01348	2	Jack	0.144/3.66	0.170/4.32	0.275/6.99	14	20	Rt. Angle Wire Contact
01358	1	Plug	0.144/3.66	0.167/4.24	0.275/6.99	12	30	Rt. Angle Wire Contact
01359	2	Jack	0.144/3.66	0.170/4.32	0.275/6.99	12	30	Rt. Angle Wire Contact
01361	1	Plug	0.186/4.72	0.167/4.24	0.275/6.99	10	30	Rt. Angle Wire Contact
01362	2	Jack	0.186/4.72	0.170/4.32	0.275/6.99	10	30	Rt. Angle Wire Contact
01369	1	Plug	0.135/3.43	0.145/3.68	0.275/6.99	12	30	Rt. Angle Wire Contact-Low Profile
01381	3	Plug	0.250/6.35	0.145/3.68	0.275/6.99	12	30	Straight Wire Contact
01382	4	Jack	0.300/7.62	0.155/3.94	0.275/6.99	12	30	Straight Wire Contact
01131	1	Plug	0.250/6.35	0.187/4.75	0.281/7.14	8	40	Rt. Angle Wire Contact

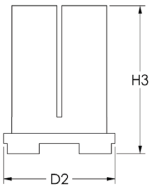


Fig. 5

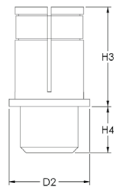


Fig. 6

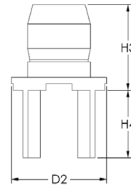


Fig. 7

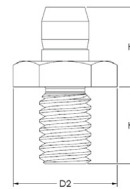


Fig. 8

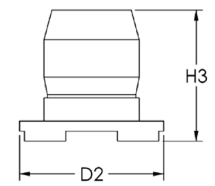


Fig. 9

Part #	Fig.	Gender	Hgt.(H3)/mm	Hgt.(H4)/mm	Dia.(D2)/mm	AMPS	Description
01563	N/A	Jack	0.250/6.35	0.170/4.33	0.281/7.14	40	Rt. Angle Wire Jack
01509	6	Jack	0.270/6.86	0.125/3.18	0.218/5.54	40	Thru-Hole Jack
01127	5	Jack	0.290/7.37	N/A	0.218/5.54	40	SMT Jack
01333	5	Jack	0.200/5.08	N/A	0.218/5.54	40	SMT Jack
01347	9	Plug	0.197/5.00	N/A	0.218/5.54	40	SMT Plug
01562	N/A	Jack	0.196/4.99	0.247/6.28	0.218/5.54	40	4 Leg Thru-Hole
01385	7	Plug	0.197/5.00	0.155/3.94	0.218/5.54	40	4 Leg Thru-Hole
01547	8	Plug	0.258/6.55	0.273/6.94	0.318/8.08	30	#8-32 Thread Mount

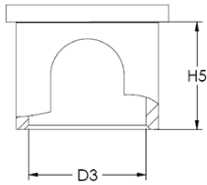


Fig. 10

Part #	Fig.	Gender	Hgt.(H5)/mm	Dia.(D3)/mm	Temp (Max)	Description
01208-2	10	N/A	0.249/6.32	0.272/6.91	200° F	Cap
01332-2	10	N/A	0.144/3.66	0.272/6.91	200° F	Cap

Bomar  
Continental  
SRC Haverhill  
SRI Connector Gage  
SRI Hermetics  
Tekna Seal  
Winchester



Winchester products are now under the Win™ brand from Winchester Interconnect.