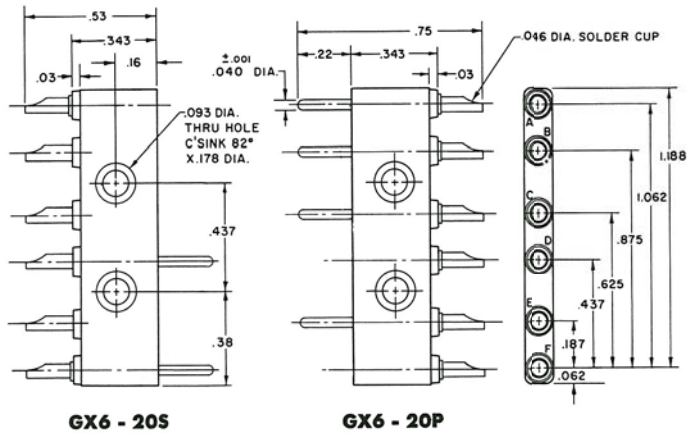
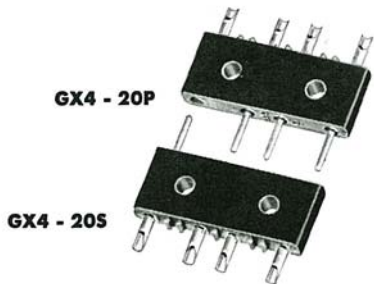
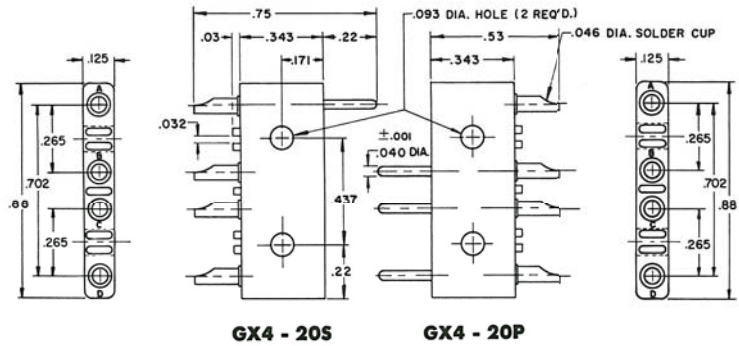
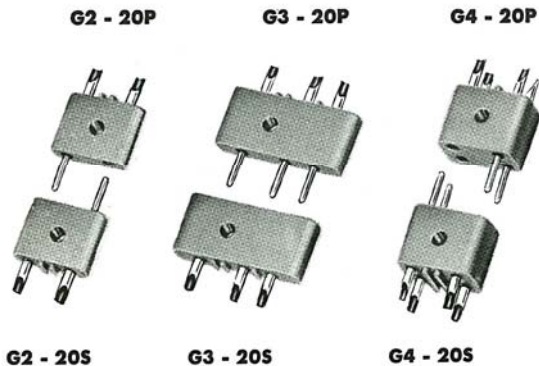
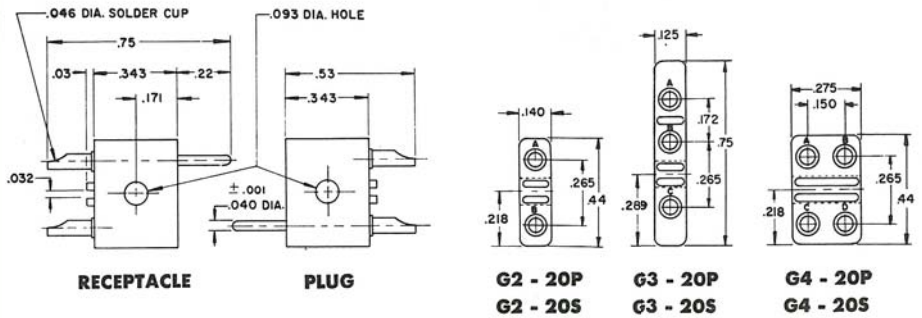
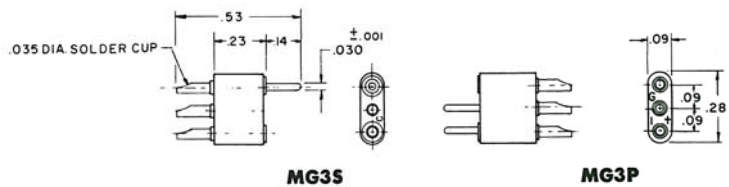
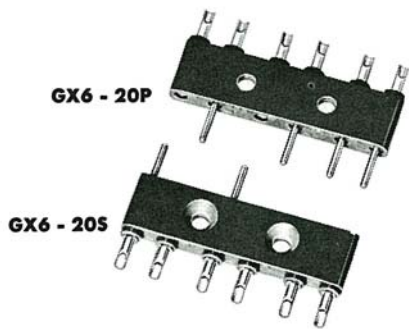


TYPE G-20 miniature connectors



ILLUSTRATIONS ACTUAL SIZE

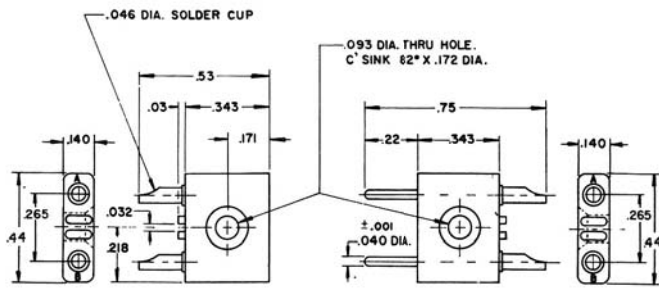


NOTES

Pin contacts are brass, gold plated. Socket contacts are gold plated phosphor bronze. Standard body material is mineral filled Melamine Type MME per MIL-M-14 specifications.

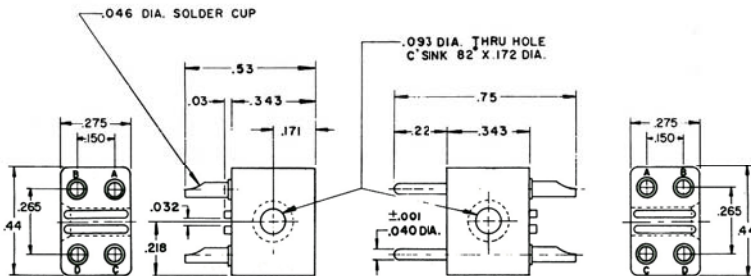
TYPE G-20

miniature connectors



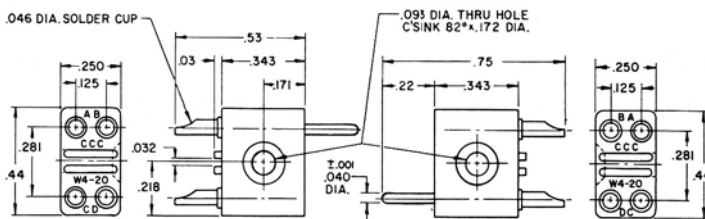
G2 - 20SS

G2 - 20PP



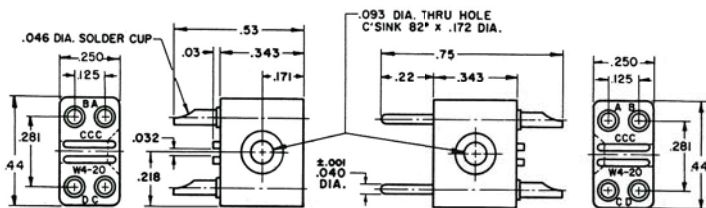
G4 - 20SS

G4 - 20PP



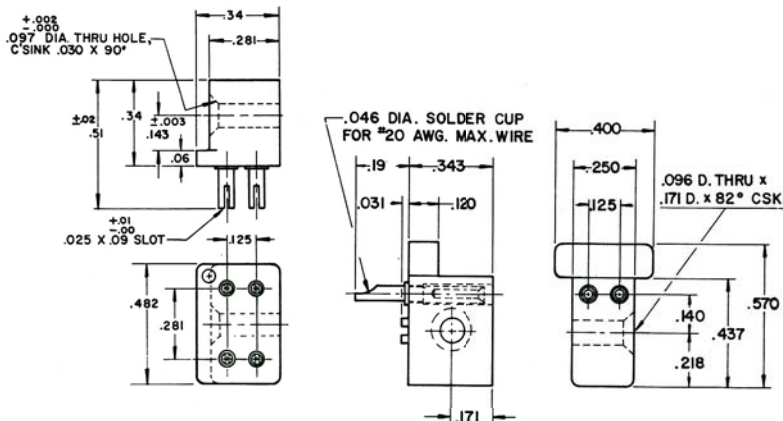
W4 - 20P

W4 - 20S



WW4 - 20SS

WW4 - 20PP



145 - 12 - 12

G4 - 20PP

W4 - 20P

G4 - 20SS

W4 - 20S

ACTUAL SIZE

ELECTRICAL AND MECHANICAL RATINGS

Voltage Ratings:	Breakdown	Test
Pin-to-Chassis		
At Sea Level	1450V. RMS	950V. RMS
At 70,000 Ft.	450V. RMS	300V. RMS

Contact-to-Contact	Breakdown	Test
At Sea Level	3500V. RMS	2300V. RMS
At 70,000 Ft.	650V. RMS	425V. RMS

Current Rating:

5 Amps Continuous 7.5 Amps Max.

Minimum Creepage Between Contacts . . .125"

Minimum Air Space Between Contacts . . .093"

Contacts, Center-to-Center150"

Solder Cup #20 AWG Wire