



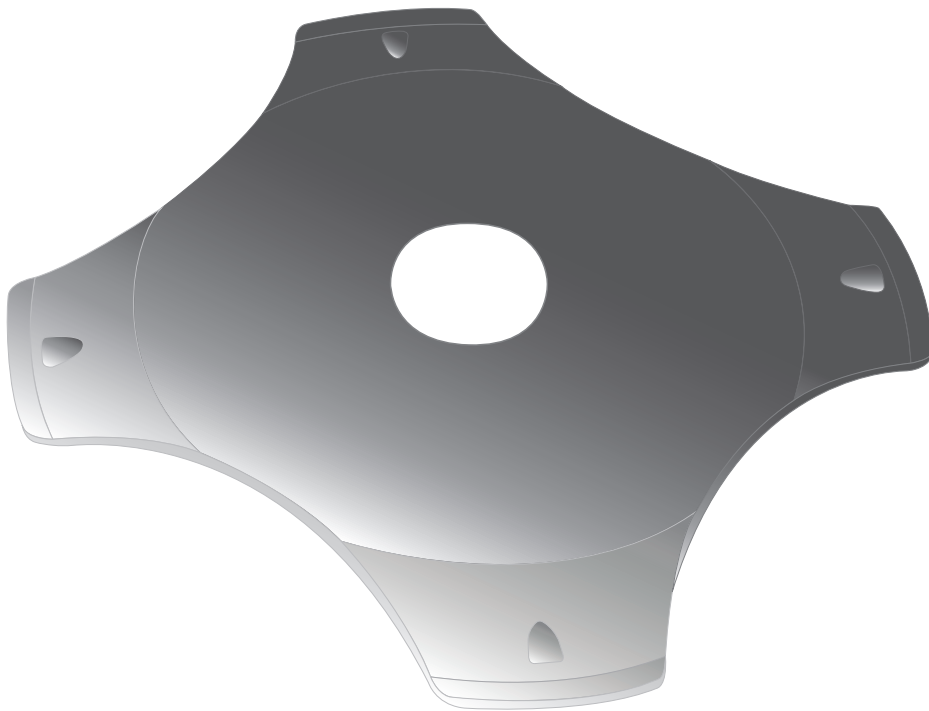
*DOMES* | *WITH* *HOLE*  
**SWITCH'AIR™**

NON-STICK

TECHNOLOGY

*SUPERIOR QUALITY  
AND DURABILITY*

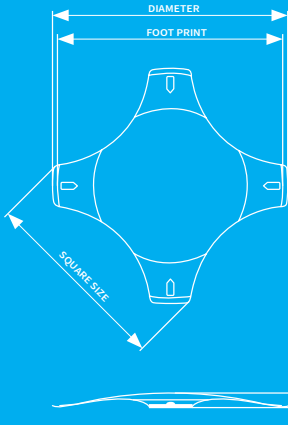
*GREAT TACTILE FEEL*



# WHY CHOOSE NICOMATIC DOMES

- EXCLUSIVE SWITCH'AIR™ TECHNOLOGY
- LIFE EXPECTANCY, 1 MILLION CYCLES GUARANTEED
- SHORTEST LEAD TIMES IN THE INDUSTRY
- DIVERSE PACKAGING OPTIONS
- 2D AVAILABLE ON THE WEBSITE
- EASY CUSTOM ON REQUEST

## TECHNICAL FEATURES



**QUALIFICATION TESTS**  
According to ASTM F2592-16

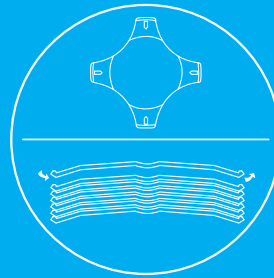
**STAINLESS STEEL**

**TEMPERATURE**  
Storage: -55°C/+125°C  
Operating: -40°C/+105°C

**ELECTRICAL FEATURES**  
Switching voltage:  
0.1 to 100 VDC  
Switching current:  
5µA to 100mA DC  
Switching capacity 1W

**CONTACT RESISTANCE**  
< 100 mOhm

**RoHS Compliant**



**SWITCH'AIR™ TECHNOLOGY**

Ease automatic assembly by eliminating the suction effect thanks to an exclusive non stick switch'air technology

## TYPES

**T R I P F O R C E** | (±30gr)

**10MM 4L H**      **280 • 340 • 400**

<b>HOLE Ø</b>	<b>3.1</b>	<b>•</b>	<b>2.6</b>	<b>•</b>	<b>1.8</b>
<b>REBOUND FORCE</b> (±30gr)	<b>65</b>				
<b>HEIGHT</b> (0/-0.20 mm)	<b>0.65</b>				
<b>TOTAL TRAVEL</b> (±0.20 mm)	<b>0.55</b>				
<b>FOOT PRINT Ø</b>	<b>9.5</b>				
<b>CLICK RATIO</b> (%)	<b>60 - 90</b>	<b>•</b>	<b>70 - 100</b>		



WEBSITE  
nicomatic.com